

# User's Manual

Congratulations for choosing **StandbySoft eXPandVISTA EZ™**, a helpful safety net for your computer while changing to a new operating system. When a new operating system is installed, it takes time to become accustomed to the changes from the previous environment. There is a new interface to learn, and certain applications and devices do not always work properly at first. **StandbySoft eXPandVISTA EZ** protects you from these problems by allowing you to switch freely between your new operating system and the old one until you are ready to use the new one all the time. When you decide to stay with just one OS, simply uninstall our product.

## 0. Table of Contents

1. **System Requirements**
2. **Glossaries**
  - a. **StandbyArea**
  - b. **StandbySwap**
  - c. **Initialize**
3. **Two ways to install a new OS without erasing your current OS**
  - a. **Option 1: Upgrade Install**
  - b. **Option 2: Clean Install**
4. **Q&A**
5. **Other Tools**
  - a. **Password Setting**
  - b. **Status**

## 1. System Requirements

- Supported Operating System:
  - Windows XP® Home Edition/Professional Edition
  - Microsoft Windows Vista™ (any supported version)
- OS install CD/DVDs
- RAM: Minimum required for either OS
- Hard Disk: Should fit both OS (for example, Windows XP and Windows Vista) plus your fileSystem volume must be formatted NTFS as the active boot volume

StandbySoft eXPandVISTA EZ gives you an invaluable ability to go back and forth between your operating system choices to determine if that upgrade/downgrade is worth it. It also helps explain what to do with the extra large disk drives common today. Just give half of your disk to a StandbySoft solution and get back peace of mind. Once you no longer need access to your old system, feel free to uninstall to immediately get access to your entire disk!



Windows Vista, Windows XP are either registered trademarks or trademarks of Microsoft Corporation in the United States and/or other countries. StandbySoft, eXPandVISTA, eXPandVISTA EZ, are trademarks of StandbySoft LLC. Please refer to Microsoft for any licensing restrictions on the use of the upgrade version of Windows Vista.

## 2. Glossaries

Before you start reading this manual, please be familiar with following terminologies.

### a. StandbyArea

When StandbySoft eXPandVISTA EZ is installed, it creates a protected hidden area on the system volume to contain the new operating system's environment.

#### Install eXPandVISTA in your current OS.



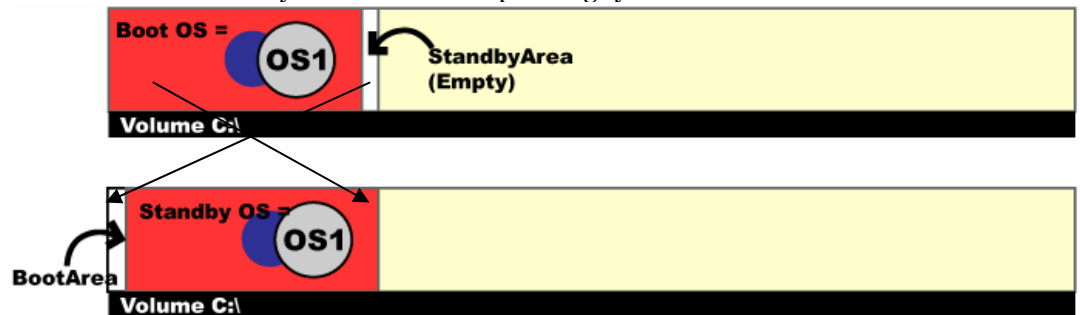
#### After install, it will create a StandbyArea



This area is called the **StandbyArea**. StandbyArea can be booted by activating **StandbySwap** (as described below).

### b. StandbySwap

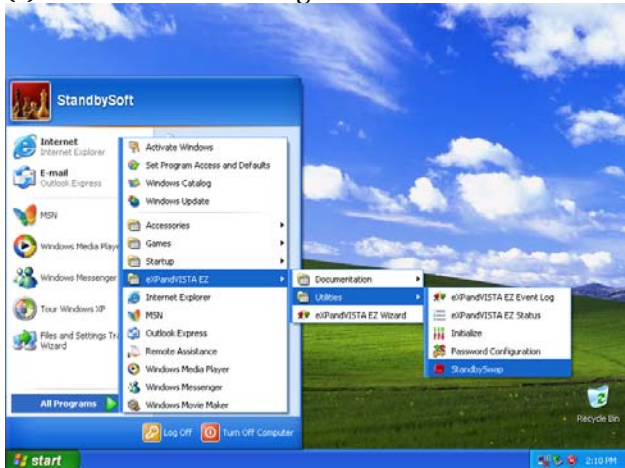
"StandbySwap" will swap the current operating system's area with the "StandbyArea." By doing this, the current operating system area will remain untouched while you install a new operating system into the new area.



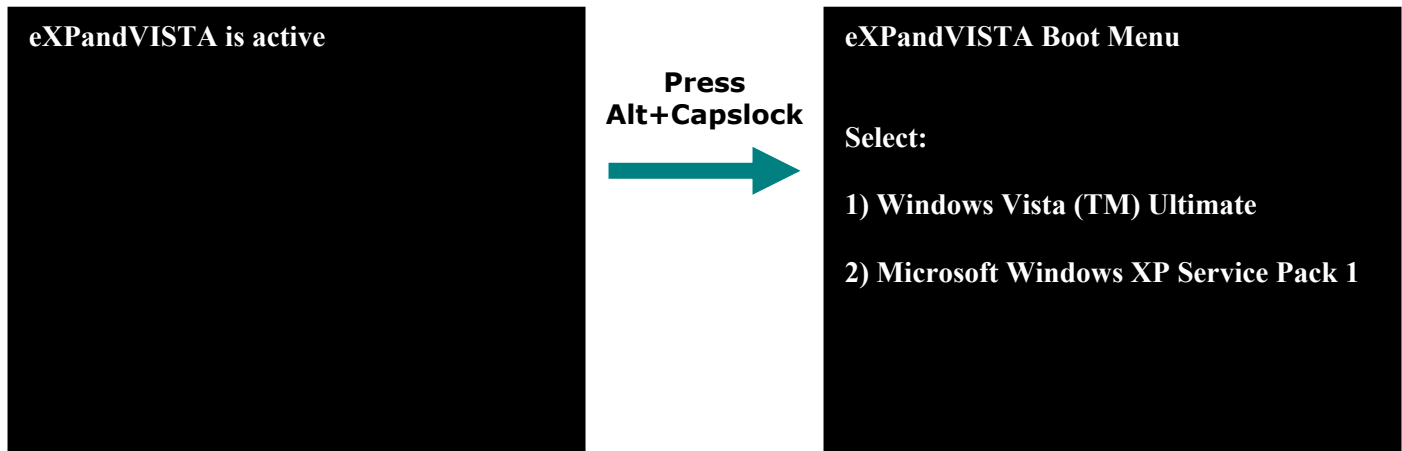
Save any work and close all applications before using the StandbySwap command, because it will reboot your system. This function is what gives you the capability to alternate back and forth between operating systems. If you are working in your new operating system and can't get that program to work correctly, no problem! Just StandbySwap and you'll be back to your old, completely configured operating system. Don't worry. You'll be able to switch again to the other operating system simply by StandbySwapping another time!

#### Perform "StandbySwap" by either of below two methods:

(1) Start Menu → All Programs → eXPandVISTA EZ → Utilities → **StandbySwap**



(2) Reboot the computer, and press **Alt+Capslock** when you see the “eXPandVISTA active” message. This will bring you to the eXPandVISTA EZ boot menu that will allow you to choose the operating system you wish to use!

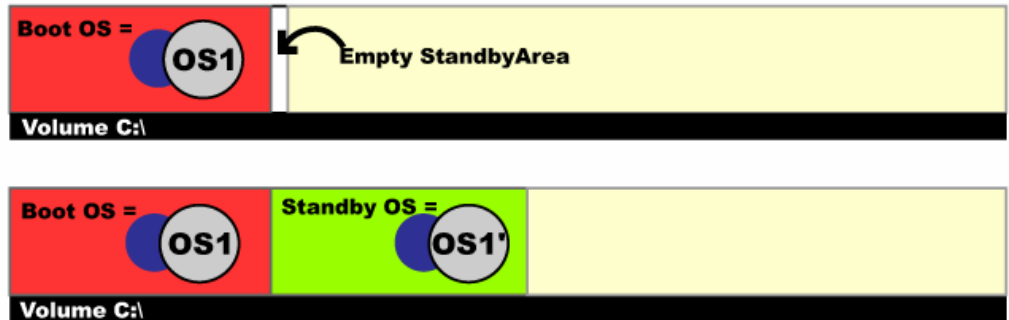


If you don't press Alt+Capslock, previously running OS will boot.

An example of the boot menu.

### c. Initialize

“Initialize” copies the system volume contents into the StandbyArea. If there are any files/folders in StandbyArea before Initialize, they will be overwritten. If it's empty, the operation would result as below.

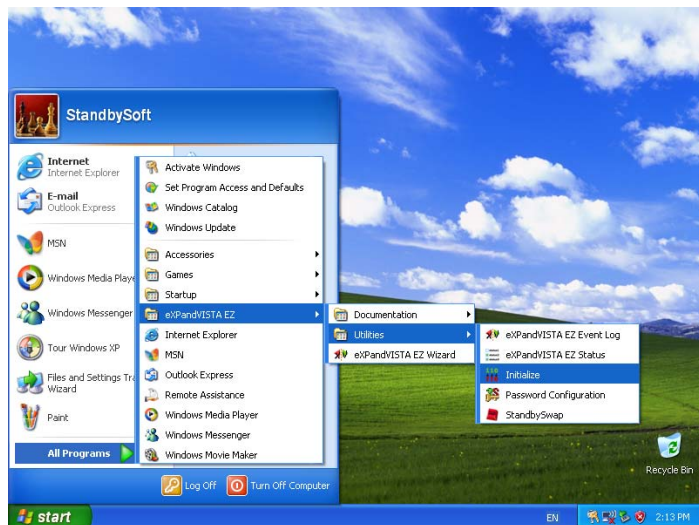


This function will be used to backup the current OS environment before upgrading it into a new one. Initialize will copy your current operating system into a StandbyArea. This way, all your applications and data are available in both areas. This operation will also be used when you want to start over a failed upgrade.

#### Perform “Initialize” by:

Start Menu → All Programs → eXPandVISTA EZ → Utilities → **Initialize**.

If password is asked, default Password is “XV”. If you want to set a new password, refer to Chapter 5a: “Password Setting”. Make sure you are ready to overwrite the contents in the StandbyArea.



### 3. Two ways to install a new OS without erasing your current OS.

#### a. OS Upgrade (recommended)

This option is for users who will wish to use their applications and files right away on their new operating system. To do so, StandbySoft eXPandVISTA EZ can **Initialize** the area by making a copy of your current operating system in the new area, which can be upgraded (an option of the Microsoft install procedure) to the new operating system.

(1) Install eXPandVISTA into current OS (OS1)



(2) Small "StandbyArea" is created



(3) "Initialize" command will copy OS1 environment to "StandbyArea" (OS1')



(4) "StandbySwap" will Swap two areas and boot OS1' instead of OS1 (OS1 now in "StandbyArea")



(5) Apply new OS (OS2) upgrade to current OS (OS1') (OS1 still in "StandbyArea", untouched)



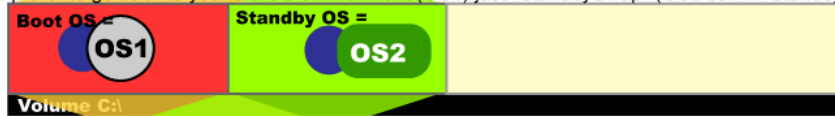
(6) OS1 environment becomes OS2 (OS1 still in "StandbyArea")



(7) Try new OS (OS2) to see if everything works fine under it.



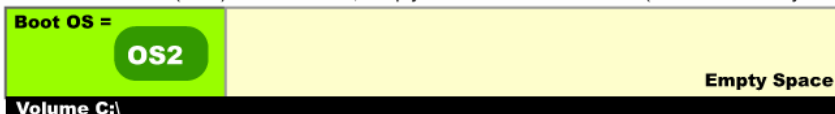
(8) If you prefer to go back to your old OS environment (OS1) just "StandbySwap" (OS2 still in "StandbyArea")



(9) Another "StandbySwap" will boot your new OS (OS2) again. (OS1 again in "StandbyArea")



(10) When old environment (OS1) is not needed, simply uninstall eXPandVISTA. (deletes "StandbyArea")



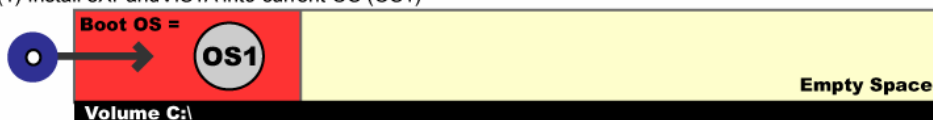
- (1) Install eXPandVISTA EZ into your current OS (XP, for example).
- (2) At the end of installing eXPandVISTA EZ, you will be presented with the choice of beginning the **Startup Wizard**. If you are uncertain at this time whether you wish to perform an upgrade, then simply launch it later from Start Menu → Programs → StandbySoft eXPandVISTA EZ → StartupWizard. After the Wizard launches, choose the first choice "upgrade OS" and follow instructions.
- (3) When you choose to Initialize from the Wizard, you will be presented with a confirmation dialog which will ask what kinds of files should be copied to the StandbyArea. In order to save space, StandbySoft eXPandVISTA EZ can be instructed not to copy certain kinds of files, including unnecessary temporary files. However, on most modern systems a large amount of space can also be saved by not copying large media files if you are not intending to use with the new OS you are about to install. Also, backup files are quite large, and likely will not be necessary to duplicate. If you do need access to these files in both operating systems, then simply uncheck the appropriate boxes, and StandbySoft eXPandVISTA EZ will copy these files along with the rest of the system.
- (4) StandbySwap from Wizard will boot into a system that looks identical to the one you were just using, except that you will receive a message informing you that you have StandbySwapped. Make sure to remove any bootable media such as CD/DVD or floppy before click on StandbySwap button on the wizard.

- (5) After confirming the duplicated system booted successfully after StandbySwap, you will place the CD/DVD for your new operating system into the disc drive, and follow the instructions for that operating system's setup to complete upgrade installation of the new operating system. Be sure you have an upgrade capable CD/DVD to avoid overwriting your current OS environment to be overwritten. The matrix of OS upgrade ability is listed in the readme.
- (6) Now you can try your upgraded OS while your previous OS is hidden and available in the StandbyArea.
- (7) StandbySwap will hide the upgraded OS and boot old OS in its place.

## b. Clean OS Install

The second option is to install your new operating system into the blank StandbyArea. This has the advantage that it will require less disk space (comparing to the other option "OS Upgrade"), and the new environment could be more stable and will likely have faster response times.

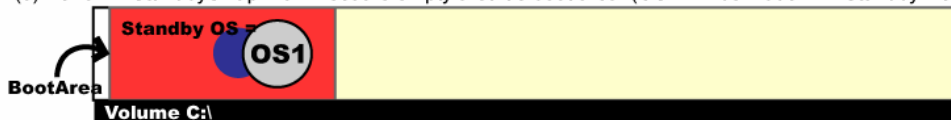
- (1) Install eXPandVISTA into current OS (OS1)



- (2) A Small, empty "StandbyArea" is created



- (3) Perform "StandbySwap". It will set the empty area as boot area. (OS1 will be hidden in "StandbyArea")



- (4) Clean install new OS (OS2) from installation CD (OS1 still in "StandbyArea")



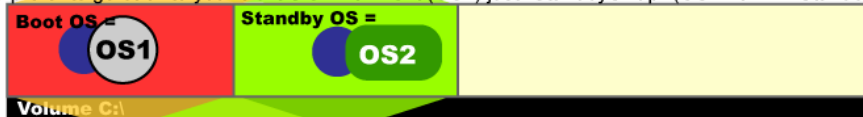
- (5) New OS installed (OS1 still in "StandbyArea").



- (6) Re-install eXPandVISTA EZ in new OS environment to enable StandbySwap again.



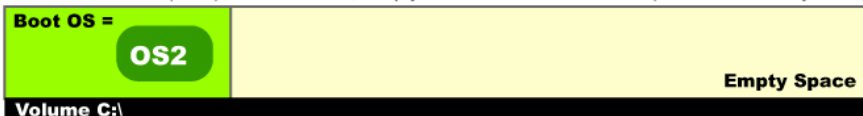
- (7) If you prefer to go back to your old OS environment (OS1) just "StandbySwap" (OS2 now in "StandbyArea")



- (8) Another "StandbySwap" will boot your new OS2 again. (OS1 again in "StandbyArea")



- (9) When old environment (OS1) is not needed, simply uninstall eXPandVISTA. (deletes "StandbyArea")



- (1) Install eXPandVISTA EZ into your current OS (e.g. XP).
- (2) A small "StandbyArea" is created as shown.
- (3) Make sure you have nothing in your DVD/CD drive. Before performing a **StandbySwap**. Your system will boot from a blank area that you can install your new operating system into. Since this boot area is empty it will not boot successfully. The below message or similar will be displayed: "BOOTMGR is missing / Press Ctrl + Alt + Del to restart". This is the time when you want to insert an OS installation disc.
- (4) After inserting a disc, reboot by pressing Ctrl + Alt+ Del. The following message will be displayed. "Press any key to boot from DVD...". You should press a key to start it, and then the operating system's installer should guide you through the rest of the installation process. In case you have multiple partitions, you should select the same system partition where the previous OS is installed (e.g. C:). **WARNING: Do NOT choose to format during the install, or you will lose your prior system.**
- (5) The new OS is installed while your previous OS is hidden in the StandbyArea.
- (6) Re-install eXPandVISTA EZ in the new OS to enable StandbySwap again in order to enable changing the OS. Now you can try your new OS while your previous OS is hidden and available in the StandbyArea.
- (7) StandbySwap will hide the new OS and boot old OS.

## 4. Q&A

### Q. What if I can't boot from the DVD, or my installation fails?

A. If you haven't started the installation process yet, then there is no problem. To return to your old system, press Alt+Capslock when you see this message during reboot: "eXPandVISTA active...". This will bring you to a menu that will allow you to choose to boot from either system. However, if your installation fails midway through, it is possible that the new operating system might overwrite our boot utility. If this is the case, then you will need to install a compatible operating system onto the computer (WITHOUT FORMATTING THE DRIVE), and then you will need to reinstall StandbySoft eXPandVISTA EZ. At that point, you will be able to reboot and access the aforementioned boot menu and return to your original system.

### Q. What happens when I'm done with my old operating system forever?

A. Once you're done with your old operating system, simply stay in the new operating system, and uninstall our product!

### Q. What if I decide that I don't want to upgrade after all?

A. No problem! Just StandbySwap to the old operating system, and uninstall our product from there!

## 5. Other Tools

### a. Password Configuration

Password Configuration allows you to prevent accidental initializations. If an initialization is run when there is already an OS in the StandbyArea, any data there will be overwritten! This means that if you were to run our Initialize utility from your new operating system, you could lose your older system! To make this less likely, we have incorporated a password into the utility. Use Password Configuration to change the password.

#### 1. Start Password Configuration

To change access to Initialize and StandbySwap from the Start Menu, start Password Configuration from: StartMenu → All Programs → eXPandVISTA EZ → Utilities → Password Configuration. You will be prompted to type in a password (Screen 1). The default password is "XV".

#### 2. Set a new password (if you need more security)

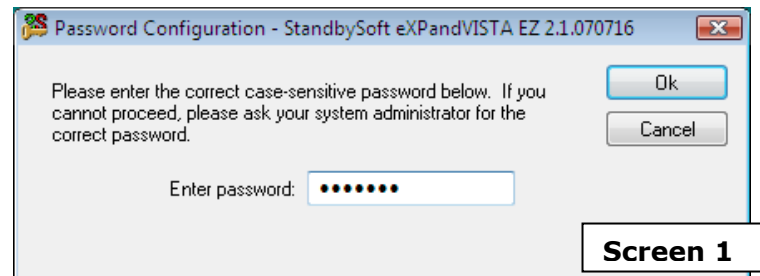
You will see a screen like Screen 2. Type in a new password in the first field. Then retype the same new password again to verify you have typed in the correct password. You may check or uncheck the boxes to select the functions you want the password to protect. Then click OK. If successful, you will be prompted with the message "Password successfully set"

#### 3. Disable password (if you need easier access)

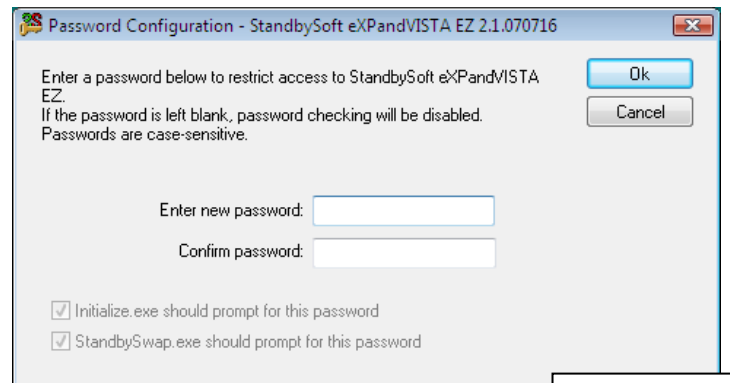
It is also possible to disable the password to enjoy free access to Initialize from the Start Menu. After completing procedure 2 above simply leave both fields for the password blank. Then click "OK". You will be prompted with the message "Password disabled".

### b. eXPandVISTA Status

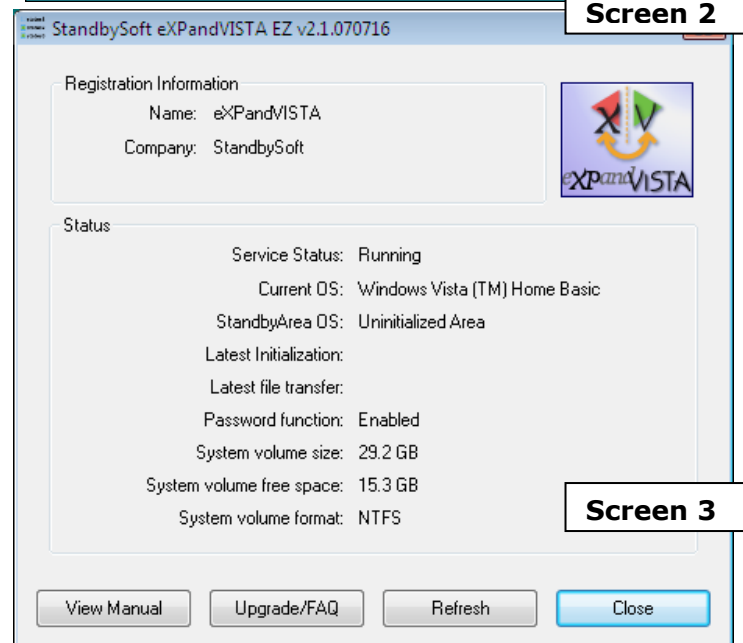
Screen 3 describes the status of the StandbyArea. . By clicking Refresh, you will see the status change after an Initialize. In order to launch this window, select "StandbySoft eXPandVISTA EZ Status" from StartMenu → All) Programs → eXPandVISTA EZ → eXPandVISTA EZ Status.



Screen 1



Screen 2



Screen 3